

IMPROSAFE® Blood Collection Set
IMPROSAFE® Blood Collection Set (W/ Pre-attached Holder)
IMPROVACUTER® Blood Collection Set (W/ Pre-attached Holder)
INSTRUCTION FOR USE

Product List

Products	Accessories	
	Safety Shield	Needle Holder
IMPROSAFE® Blood Collection Set	✓	/
IMPROSAFE® Blood Collection Set (W/ Pre-attached Holder)	✓	✓
IMPROVACUTER® Blood Collection Set (W/ Pre-attached Holder)	/	✓

Intended Use

The products and evacuated blood collection tube/ syringe are used together for the collection of venous blood. The winged needles of IMPROSAFE® Blood Collection Sets are designed with a safety shield which can be activated to cover the needle immediately following blood collection to aid in the protection against accidental needle stick injury. The Pre-attached Holder is designed to aid in protection against accidental non-patient needle injury and blood splatter. It also helps to improve the working efficiency as it eliminates the procedure of holder assembling.

Product Description

The products are single-use, sterile, winged needle bonded to a flexible tubing with Luer adapter. They're sterile and non-pyrogenic.

Item	Specifications		
	Size		Color
	Gauge x Needle Length x Tubing Length	Needle Diameter x Needle Length x Tubing Length	
Blood Collection Set	21G x 3/4" x 7"	0.8 x 19 mm x 180 mm	Green
	21G x 3/4" x 12"	0.8 x 19 mm x 305 mm	Green
	22G x 3/4" x 7"	0.7 x 19 mm x 180 mm	Black
	22G x 3/4" x 12"	0.7 x 19 mm x 305 mm	Black
	23G x 3/4" x 7"	0.6 x 19 mm x 180 mm	Blue
	23G x 3/4" x 12"	0.6 x 19 mm x 305 mm	Blue
	25G x 3/4" x 7"	0.5 x 19 mm x 180 mm	Orange
	25G x 3/4" x 12"	0.5 x 19 mm x 305 mm	Orange
	27G x 2/5" x 7"	0.4 x 10 mm x 180 mm	Gray
	27G x 2/5" x 12"	0.4 x 10 mm x 305 mm	Gray

Precautions

1. Handled by appropriately trained healthcare professionals.
2. Handle all biologic samples and blood collection "sharps" (lancets, needles, Luer adapters and blood collection sets) in accordance with the policies and procedures of your facility.
3. Obtain appropriate medical attention in the event of any exposure to biologic samples (e.g. through a puncture injury) since samples may transmit viral hepatitis, HIV(AIDS) or other infectious diseases.
4. Refrain from carelessly releasing the lock or accidentally removing the rubber sleeve, or forcefully pulling the wings, as such actions might damage the integrity of the product.
5. Do not forcefully release or re-activate the safety mechanism after it has been activated.
6. Keep hands behind needle at all times during use and disposal the device.

Cautions

1. Single use only. A reuse of the product may cause harmful infections, injury or death.
2. Gloves should be worn when handling blood collection set and during venipuncture to minimize exposure hazard.
3. Do not use if the package is opened or damaged, needlestick is defective or the safety shield is not firmly assembled.
4. Discard all blood collection "sharps" in biohazard containers approved for their disposal.

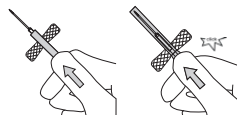
Storage

Store the device in a dry, ventilated place. Avoid direct sunshine and away from the source of heat or ignition.

Handling

■ Activation of Safety Mechanism

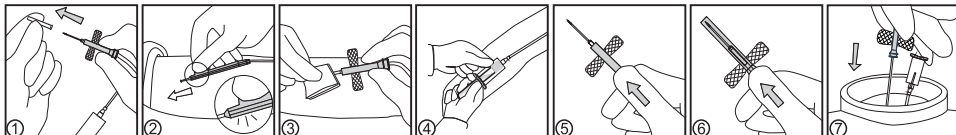
After completion of blood collection, remove needle from vein, slide the translucent yellow safety shield forward with the other hand, pulling the tubing backward until an audible click is heard indicating the needle is completely retracted and locked.



GLOVES SHOULD BE WORN WHEN HANDLING BLOOD COLLECTION SET AND DURING VENIPUNCTURE TO MINIMIZE EXPOSURE HAZARD.

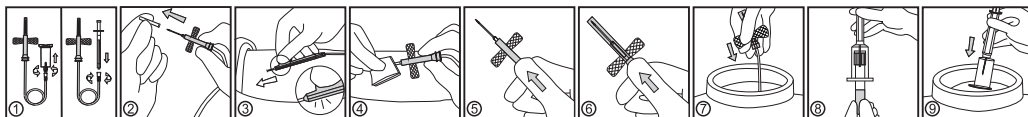
■ For Blood Collection

1. Twist the conical fitting of the Luer Adapter in a clockwise direction to ensure the Luer Adapter firmly fitted.
2. Remove the needle sheath and the closure-penetration needle sheath.
3. Perform venipuncture by holding wings. A blood flashback signs a successful venipuncture.
4. Hold the needle holder, place first tube into holder, puncturing diaphragm to begin flow. When first tube has filled to its stated volume and blood flow cease, remove it from holder.
5. Place succeeding tubes in holder, puncturing diaphragm to begin flow.
6. After completion of blood collection, gently remove needle from vein, slide the translucent yellow safety shield forward with the other hand pulling the tubing backward until an audible click is heard indicating the needle is completely retracted and locked to avoid possible needlestick injury.
7. Dispose of needle and holder per your facility's policy.



■ For Blood Collection Using a Syringe

1. Remove Luer Adapter with or without holder and attach syringe.
2. Remove the needle sheath.
3. Follow "Blood Collection" steps 3 - 7.
4. Transfer blood specimen from syringe using a blood transfer device.
5. Dispose of syringe and blood transfer device per your facility's policy.



■ For Short Term IV Administration (up to 2 hours)

1. Remove Luer Adapter with or without holder.
2. Attach IV set or syringe to the female Luer Adapter and remove needle sheath.
3. Prime set in accordance with recommended procedure.

Gauge	Priming Volume	
	Tubing (inch)	Volume (ml)
21G	7"/12"	0.22/0.34
22G	7"/12"	0.22/0.34
23G	7"/12"	0.22/0.34
25G	7"/12"	0.22/0.34
27G	7"/12"	0.22/0.34

4. Perform venipuncture by holding wings. Administer medication. It is recommended that this device be changed per the institutions procedures, but no longer than 2 hours.
5. Safety shield activation: see section Activation of Safety Mechanism.
6. Dispose of all used materials in an appropriate container and wash hands.

Symbol and Mark Key

Do not re-use	Do not use if package is damaged	Use-by date	Catalogue number
Batch code	Keep away from sunlight	CE marking	Manufacturer
Authorized representative in the European Community	Consult Instructions for Use		
Sterilized using ethylene oxide	Date of manufacture		

Production Batch No. and Expiration Date

Production Batch Code and Expiry Date on the seal of package. Shelf Life: 3 years. Needles expire on the last day of the month and year indicated.

Guangzhou Improve Medical Instruments Co., Ltd.
No.102, Kaiyuan Avenue, Science City, Guangzhou Economic & Technological Development District, Guangzhou, 510530, CHINA
Shanghai International Holding Corp. GmbH(Europe)
Eiffestrasse 80, 20537 Hamburg, Germany

<http://www.improve-med.com>
Email: info@improve-medical.com
Tel: +86-20-32312610/1/2/3/4/5/6/7
Fax: +86-20-32312667/2611